

NIBE™ SOLAR F370/F470 FP215 P / PL

NIBE premium solar packages
for NIBE F370/F470 heat pumps

NEW



Features of NIBE Solar F370/F470 FP215 P / PL

Solar system tailored for optimum performance with NIBE F370/F470 exhaust air heat pumps.

Lightweight, high-efficiency panels.

Easy-to-handle panels with quick connections.

Solar control is provided by the heat pump controller, providing an integrated control system.

Solar functions and temperatures are also accessible in the the same way as other functions via the remote control accessory (SMS 40).

This enables optimum performance with the F370/470 exhaust air heat pump.

A temperature-limiting charge unit with a built-in check valve between the solar tank and the NIBE F370/470 exhaust air heat pump ensures reliable performance.

NIBE Solar F370/F470 FP215 P / PL

The P (Premium) panel is mounted vertically. The PL (Premium Landscape) is mounted horizontally.

The solar pump station has a low-energy solar pump, de-aerator, thermometers, adjusting valve, safety valve, pressure gauge, isolating valves and double check valves.

Also included are a solar expansion vessel and a wall bracket with a two-way check valve for easy servicing.

All necessary sensors are included.

This system will enable you to enjoy free energy from the sun for many years.

We wish you a sunny future!

Technical specifications

NIBE™ FP215 P / PL Solar panel

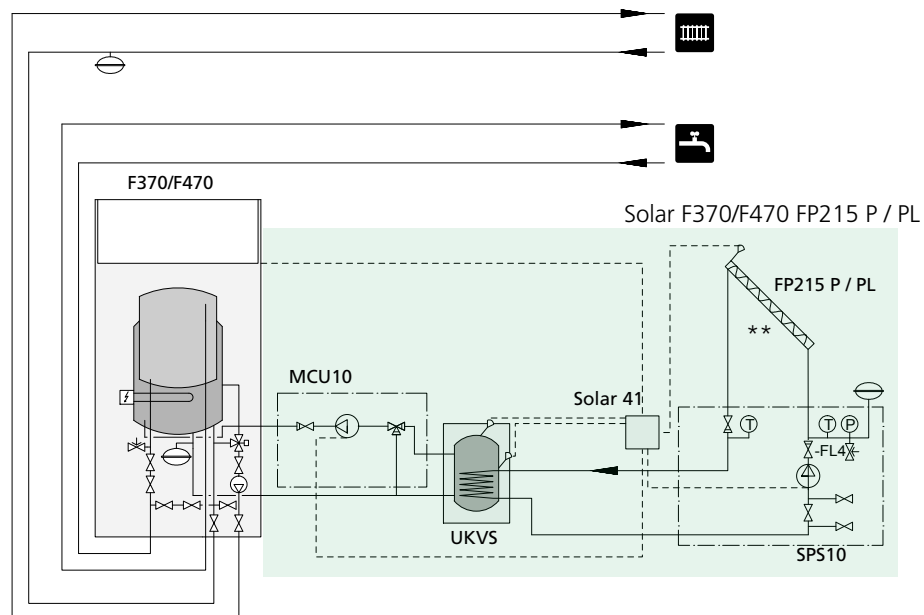
Solar panel		FP215 P	FP215 PL
Article number		057001	057002
Dimensions	mm	2088 x 1030 x 81	
Gross area	m ²	2.15	
Aperture area	m ²	1.91	
Glass thickness	mm	3.2	
Glass structure		Low-iron, tempered solar safety glass	
Collecting pipe diameter	mm	22	
Serpentine tube diameter	mm	10	
Weight	kg	32.5	33
Collector frame		black anodized	
Absorber type		serpentine pipe, Blue highly selective absorber coating	
Optical efficiency	%	80.6	82.3
Top insulation		20 mm mineral wool	
Bottom insulation		20 mm PIR sandwich insulation	
Filling volume	litres	1.65	2.32
Heat transfer medium		Propylene glycol or water in drain-back applications	
Maximum operating pressure	bar/PMPa	10	
Maximum stagnation temperature	°C ¹⁾	191.2	

1) At an irradiation of 1000 W/m² and 30 °C ambient temperature

Recommended accessories, not included

- ** Roof fixing details for different types of roofs
- ** Preinsulated flexible solar pipes, easy to split and including sensor cable, 10, 15, 20 or 25 metres
- ** Roof penetration unit

Hydraulic principle for NIBE Solar F370/F470 FP215 P / PL



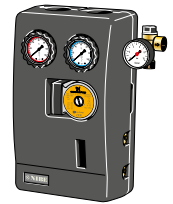
* Main Solar components included in the solar package



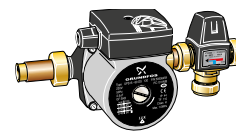
NIBE Solar Panels
NIBE Solar FP215 P / PL
* Art no 057001 (P)
* Art no 057002 (PL)
(2-3 pcs)



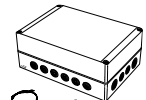
NIBE Storage tank
with solar coil
UKVS 230
* Art no 080320
(1 Pcs)



NIBE Solar pump station
SPS10
* Art no 057027
(1 Pcs)



NIBE Multi charging unit
MCU10
* Art no 067128
(1 Pcs)



NIBE Solar control
adaptor
Solar 41
* Art no 067127
(1 Pcs)

Other components included in this solar package are:

Expansion vessel, quick fittings / compensators, solar glycol.

NIBE Solar packages:

NIBE Solar F370/F470 FP215 P2 package	art no 069068
NIBE Solar F370/F470 FP215 P3 package	art no 069069
NIBE Solar F370/F470 FP215 PL2 package	art no 069070
NIBE Solar F370/F470 FP215 PL3 package	art no 069071

Our guidance for this system is:

2 – 3 persons = 2 panels, 3 – 5 persons = 3 panels